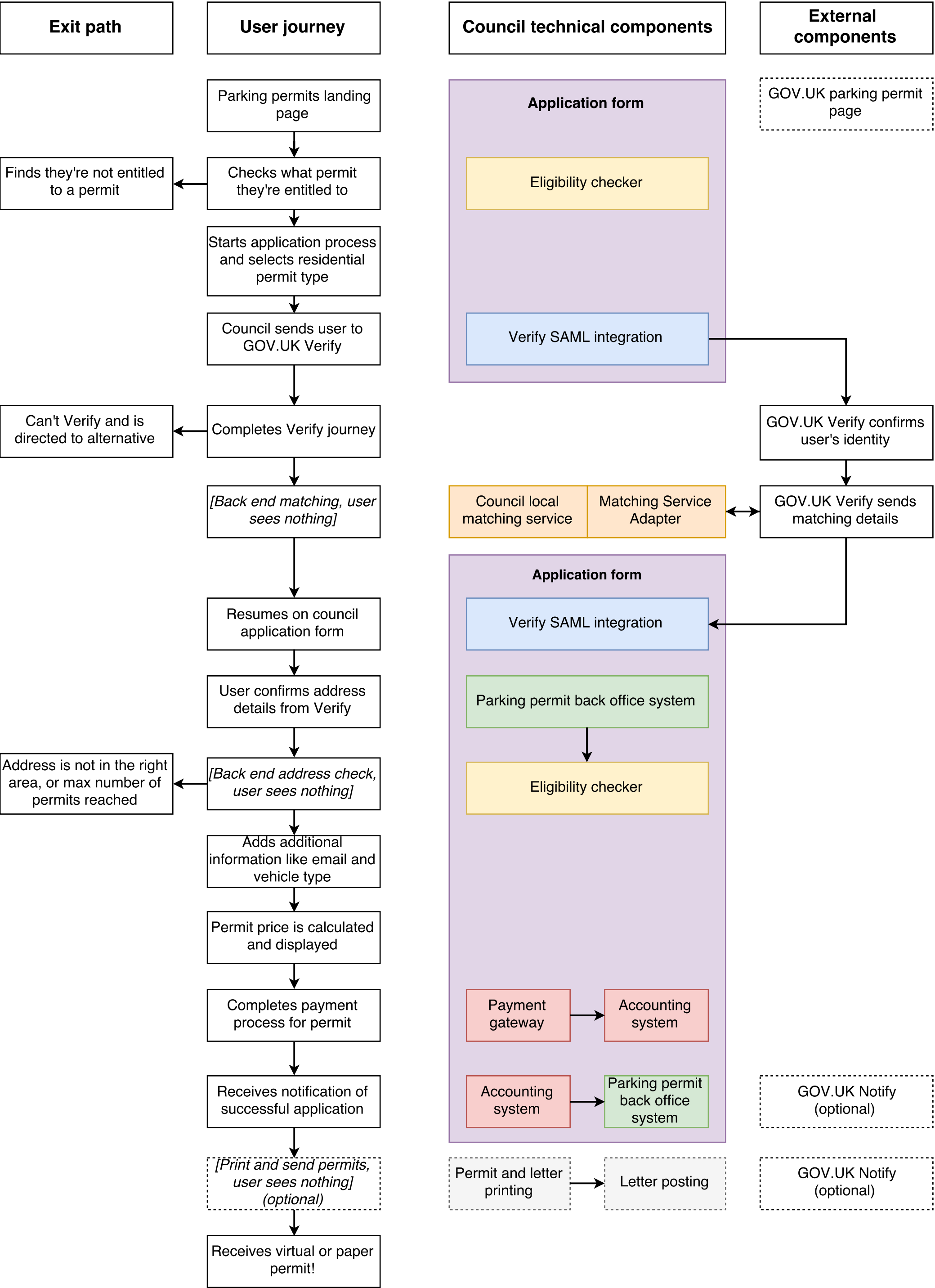


#VerifyLocal Parking Permits technical diagram (Discovery v1)



Component	Technical Definition	Required features for MVP	Ideal features
Application Form	A digital form where users enter information related to their application. This is hosted on the council's website or is accessible from it.	Matches the service pattern provided by GOV.UK Verify Can integrate with the eligibility checker Can integrate with GOV.UK Verify using SAML Can integrate with a notification product or email functionality Must be suitable for handling personal information (including Transport Layer Security (TLS) with extended validation (EV) certificates) Must meet accessibility standardsEvidence upload and storage capability Way to export and open source content and configuration	Open source product  Extensive validation of evidence; set parameters for evidence upload
Eligibility Checker	A list of addresses that can be accessed to determine whether someone is eligible for a permit in that local authority.	The system must be up to date with new addresses via links to Gazetteer, Postcode Address File or similar. To verify addresses, the database must be openly accessible to the service, or there must be frequent exports.	UPRN function recommended to improve matching Post code look up function to be coupled with CPZ data. Upon entering a post code, user to be shown a list of addresses for user to choose from. Once address is chosen user to be shown a list of eligible parking permits.
GOV.UK Verify SAML Integration	The construction that enables communication between the council and the GOV.UK Verify hub. The council must create the capacity to send and receive SAML messages to and from the hub.	A well tested, commonly used SAML 2.0 framework with mature security update policy  Ability to test SAML in isolation from user experience  Ability to handle SAML metadata dynamically	
Local Matching Service (Council LMS and Matching Service Adapter)	The LMS would be how the council digests information sent from the GOV.UK Verify hub. There is no matching, so the service will always indicate that there was no match, and that a new account is created.	If matching is performed, a matching strategy and component integration is required.  Ability to handle and return JSON  Ability to log and investigate service events	
Parking Permit Back Office System	Councils must have their own database that contains all currently issued permits. The council's local matching service checks the database to confirm eligibility, ensuring that the number of permits issued doesn't exceed the maximum number allowed for the person or household.	Ability to log and investigate service events  Application programming interfaces (APIs) or other integration mechanism	
Payment Gateway	An online product that enables the user to choose a secure payment method, for example, payment card or PayPal.	Ability to log and investigate service events  APIs or other integration mechanism	
Accounting System	A system that allows the council to process payments.	Ability to log and investigate service events  APIs or other integration mechanism	
Additional notification tool or fulfillment system	An online tool that sends a notification to the user when the application is submitted. Ideally, the tool allows the user to choose their preferred way to receive the notification. However, as a minimum it must include email as a channel/ GOV.UK Notify	Ability to log and investigate service events  APIs or other integration mechanism	
Permit and letter printing	A process to generate and deliver a physical permit for users. This is required when an application has been made and all eligibility criteria are fulfilled. It is the council's responsibility to create and deliver the permit.	Ability to log and investigate service events  APIs or other integration mechanism	